

COMPANY: EXAMPLE: POST-FRAC
WELL: PRODUCTION PROFILE
FIELD: PRODUCTION PROFILE
LOCATION: FOLLOWING THE POST-FRAC TEMP. SURVEYS, PL PROFILE ACQUIRED
PROVINCE: AFTER THREE DAYS OF PRODUCTION
LOG DATE: CLEAN-UP.

DEPTH DRILLER:
TAG PBD/FILL:
BTM. LOG DEPTH:
TOP LOG DEPTH:

SURF. REPORTED PROD: (GAS: 25.7 e3m3/d)
 (LIQUIDS: 0.5 m3/Hr, 20% WATER & DROPPING)

MEMORY LOG SERVICES:

SPINNER, TEMP, QTZ. PRESS, DENSITY, GR, CCL

FLOWING WHP: 2650 – 2700 kpa

Collar Locator (PL)		
1000	mv	23000
Perforations		
20	----	0
Gamma Ray (PL)		
0	api	100
Gamma OH		
0	api	180
Total Inflow		
0	%	100
Liquid Inflow		
0	%	100
Perforation Intervals		
		
Percent Gas Inflow		
		
Percent Liquid Prod.		
		

1.480.0 MD in M

Flow Spinner (Pass #1) Dn. @ 10 m/min		
-10.0	rps	30.0
Flow Spinner (Pass #1)		
25.0	rps	65.0
Flow Spinner (Pass #2) Dn. @ 18 m/min.		
-14.0	rps	26.0
Flow Spinner (Pass #2)		
25.0	rps	65.0
Flow Spinner (Pass #3) Dn. @ 24 m/min.		
-18.0	rps	22.0
Flow Spinner (Pass #3)		
25.0	rps	65.0
Flow Spinner (Pass #4) Dn. @ 10 m/min. (Repeat Pass)		
-12.0	rps	28.0
Flow Spinner (Pass #4)		
25.0	rps	65.0
Flow Spinner Stations (In Tbg.)		
25.0	rps	65.0
Flow Temperature (Pass #1)		
66.0	degC	71.0
Percent Inflow Profile		
0	%	200
Percent Liquid Production		
0	%	200
Percent Liquid Production		
		
Percent Gas Production		
		

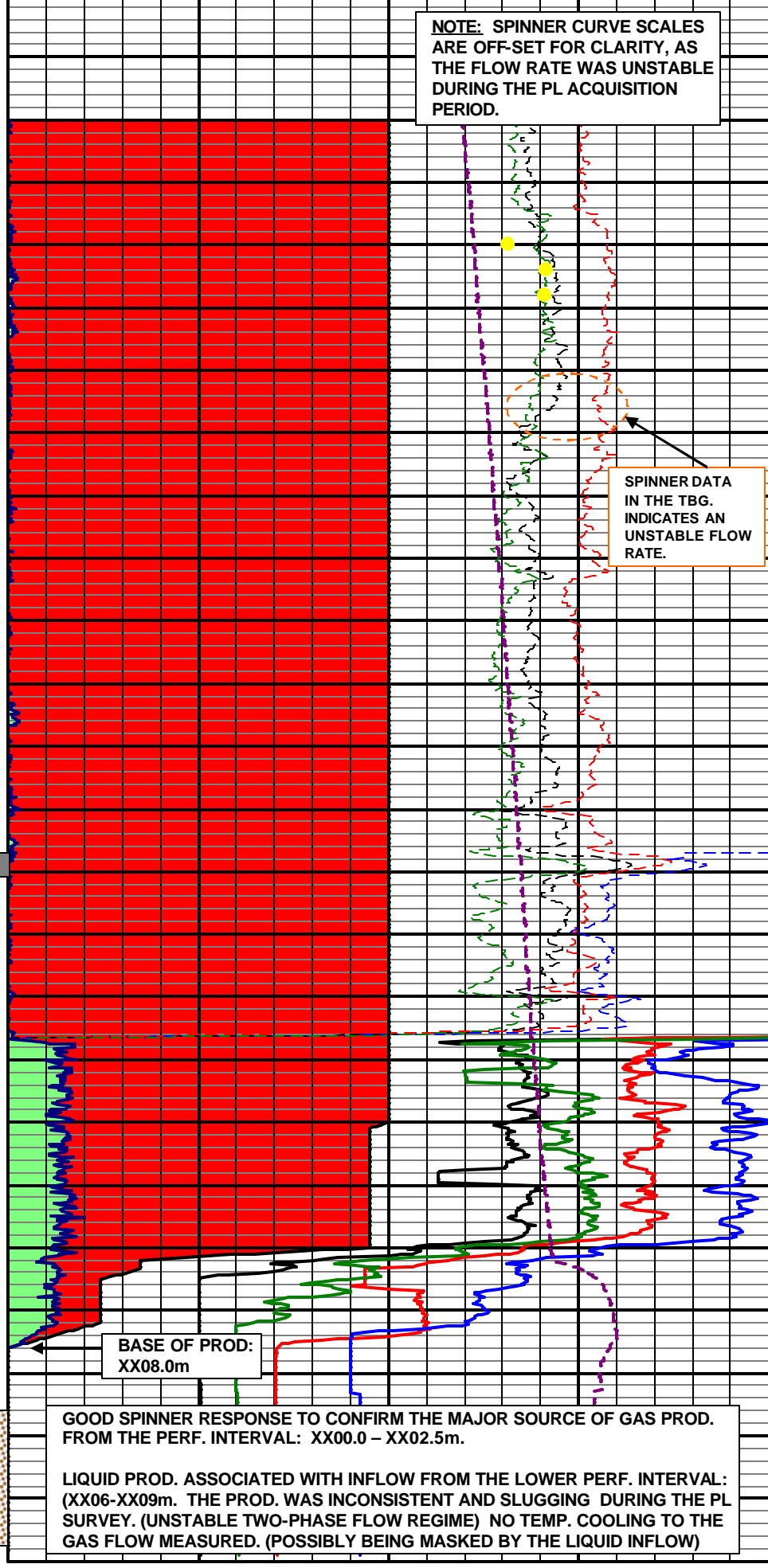
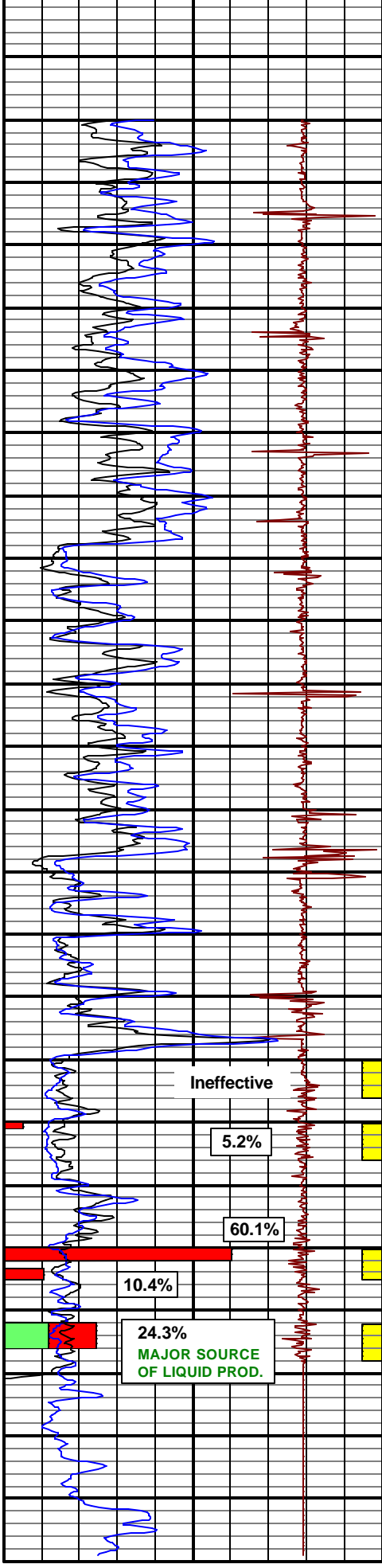
CSG, 114.3mm, LND: XX43m
 TBG, 60.3mm, LND: XX83.3m
 (WL DEPTH CORRECTED)

TAG PBD / FILL: XX13m
 FIRST LOG READING: XX11m

PL DEPTH CORRECTED TO GR. FROM RECON POST-FRAC TEMP. SURVEY.

EST. Bg: 0.02256
 (PRESSURE: 4893.5 kpa; TEMP: 69.5 C)

SURFACE GAS PROD: 25.7 e3m3/d.
 AT RESERVOIR: 579.8 m3/d



INTERPRETATION SUMMARY:

PERFORATION INTERVALS	EFFECTIVE INTERVALS	% GAS PRODUCTION	SURF. GAS EQUIV. (e3m3/d)	COMMENTS
XX85.0-XX88.0m	Ineffective	----	----	No inflow measured or observed from this perf. Interval.
XX90.0-XX93.0m	XX90.0-XX90.5m	5.2%	1.336	Minor change in fluid density. Two spinners repeat to possibly confirm this prod. inflow. ??
XX00.0-XX02.5m	XX00.0-XX01.0m	60.1	15.446	Major source of gas prod. Good correlation between spinner and density data. Minor source of liquid prod. (frac fluid ?)
	XX01.7-XX02.5m	10.4	2.673	
XX06.0-XX09.0m	XX06.0-XX08.0m	24.3	6.245	Source of gas and major source of liquid prod. Unstable two-phase flow regime. Inflow inconsistent and slugging.
	TOTALS	100%	25.7 e3m3/d	

- BASE OF PRODUCTION AT XX08.0m.
- SHUT-IN TEMP. LOGS FROM THE PL SURVEY WERE ACQUIRED UP TO 3 hrs. DIFFICULT TO CONCLUDE ANY CHANNEL SOURCES ABOVE THE PERFS. OR CONFIRM GAS PROD. SOURCES FROM THE UPPER TWO AND LOWER PERFS. INTERVALS. THE SI TEMPERATURE DATA IS RESPONDING TO FORMATION COOLING AS A RESULT OF THE FRAC TREATMENT.