

**COMPANY:** PL EXAMPLE  
**WELL:** PL EXAMPLE  
**FIELD:** 2 PERF. SETS, UPPER SET TBG.  
**LOCATION:** ISOLATED, PROD. FROM S/S.  
**PROVINCE:** DETERMINE INFLOW PROFILE AND FLOW PATH FROM LOWER PERF.  
**LOG DATE:** INTERVAL.

**DEPTH DRILLER:**  
**TAG PBD/FILL:**  
**BTM. LOG DEPTH:**  
**TOP LOG DEPTH:**

**SURF. REPORTED PROD:** (GAS: 30.67 e3m3/d)  
(OIL: 6.04 m3/d) (WATER: 0.84 m3/d)

**MEMORY LOG SERVICES:**

SPINNER, TEMP, QTZ. PRESS, DENSITY, GR, CCL

SURFACE FLOW WHP: 2500 – 2700 kpa  
SURF. (SI: 120 min.) WHP: 7400 kpa

Collar Locator (PL)	Flow Spinner (Pass #1)
-3000 mv 22000	-25.0 rps 75.0
Perforations	Flow Spinner (Pass #2)
20 ---- 0	-25.0 rps 75.0
Gamma Ray (PL)	Flow Spinner (Pass #3)
-12 api 108	-25.0 rps 75.0
Gamma OH	Flow Spinner (Pass #4)
0 api 150	-25.0 rps 75.0
SP	Flow Spinner Stations
-350 mv -250	-25.0 rps 75.0
Line Speed Pass 1	Flow Temperature (Pass #4)
-50 m/min 50	61.5 degC 71.5
Line Speed Pass 2	Temperature (Well SI: 120 min.)
-50 m/min 50	61.5 degC 71.5
Line Speed Pass 3	Flow Fluid Density (Pass #1)
-50 m/min 50	0.0 gm/cc 2.0
Line Speed Pass 4	Flow Fluid Density (Pass #4)
-50 m/min 50	0.0 gm/cc 2.0
Inflow	Neutron Porosity (SS)
0.0 e3m3/d 30.0	38.0 pu -2.0
Perforation Intervals	Liquid Hold-Up
Surf. Equiv. Gas Inflow (e3m3/d)	0.0 % 200.0
	Percent Profile
	0 % 200
	Percent Liquid Hold-Up
	Total Percent Profile

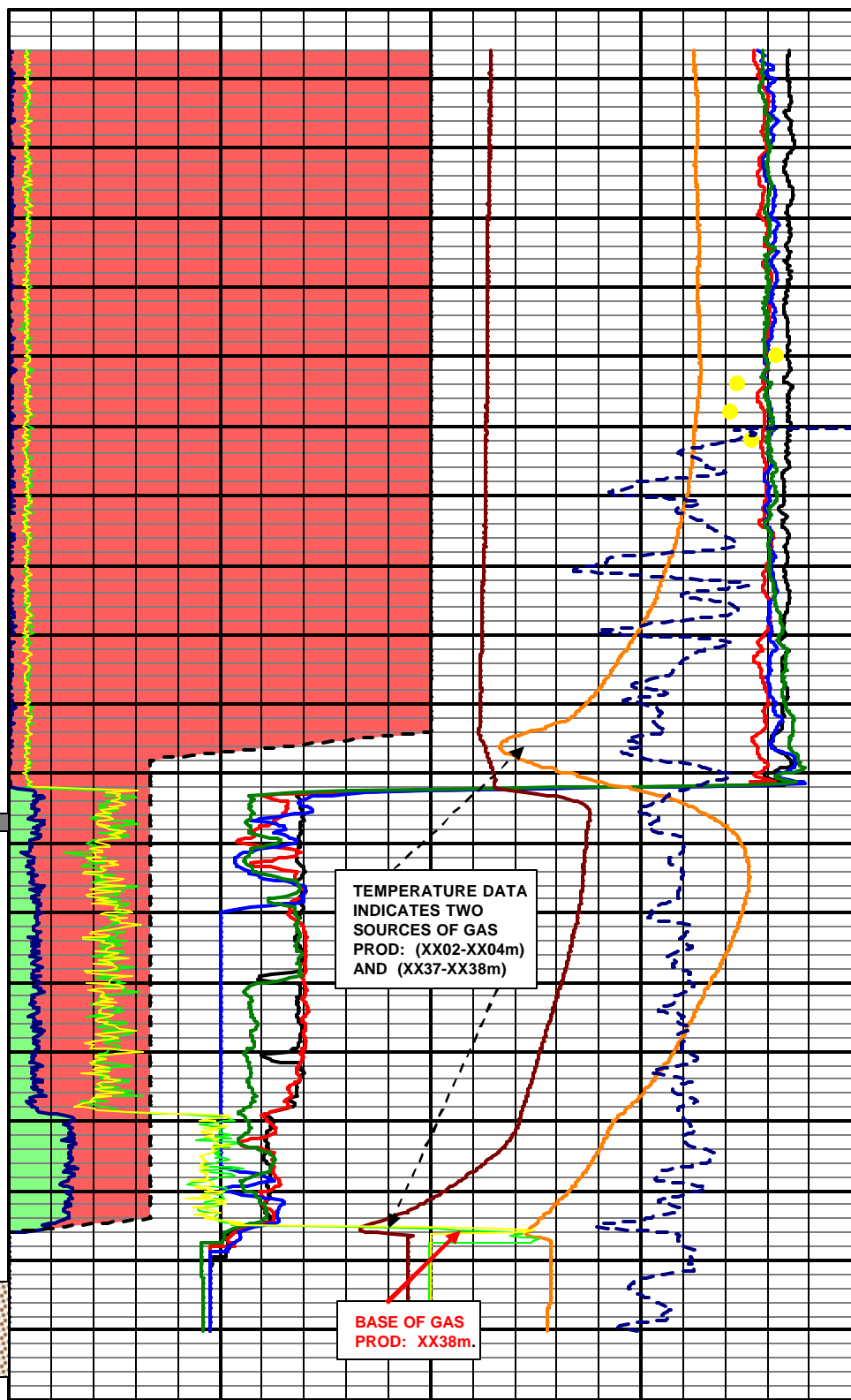
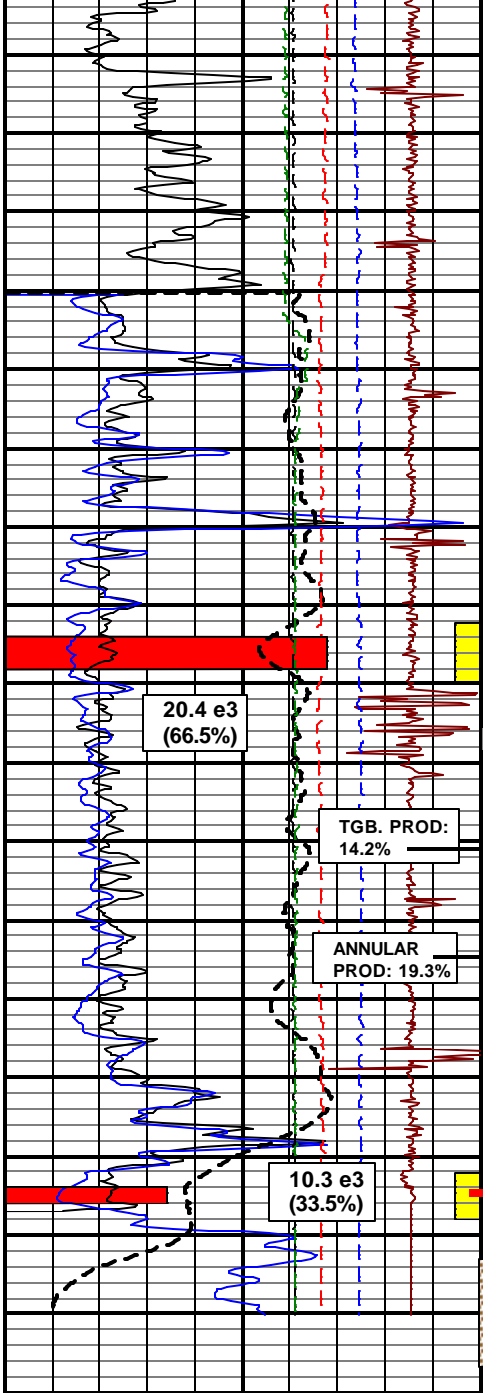
PROD. CSG, 114.3mm, LND: XX65m.  
PROD. TBG, 60.3mm, LND: XX29.4m.  
(WL DEPTH CORRECTED)

PL DEPTH CORRECTED TO GR. FROM OPEN HOLE LOGS.

TAG PBD / FILL: XX41.5m.  
FIRST LOG READING: XX39.5m.

EST. (Bg: 0.02591) (PRESS: 4282.6 kpa)  
(TEMP: 68 C)

GAS PROD. AT RESERVOIR: 794.6 m3/d



**INTERPRETATION SUMMARY:**

**UPPER RESERVOIR:**

- ZONE WAS FRACED.
- PERFORATION INTERVAL: XX01.0-XX05.0m.
- EFFECTIVE INTERVAL: XX02.0-XX04.0m.
- **TOTAL GAS PRODUCTION: 66.5%**
- **EQUIVALENT SURFACE GAS PRODUCTION: 20.393 e3m3/d.**
- NO LIQUID PRODUCTION OBSERVED FROM THE S/S DURING THE PL PROGRAM.

**LOWER RESERVOIR:**

- ZONE WAS ACIDIZED.
- PERFORATION INTERVAL: XX36.0-XX39.0m.
- EFFECTIVE INTERVAL: XX37.0-XX38.0m.
- **TOTAL GAS PRODUCTION: 33.5%**
- **EQUIVALENT SURFACE GAS PRODUCTION: 10.273 e3m3/d.**
- SPINNER DATA INDICATES THE PRODUCTION FROM THE LOWER ZONE IS FLOWING UP THE TBG. (14.2%) AND UP THE TUBING / CASING ANNULUS (19.3%) FROM THIS RESULT THE PACKER IS LEAKING. (PACKER ON DEPTH TO TBG. TALLY)
- LIQUID PRODUCTION WITHIN THE TBG. BELOW THE S/S. THIS SUGGESTS THE SOURCE OF THE LIQUID PROD. IS ASSOCIATED WITH INFLOW FROM THE LOWER PERF. INTERVAL.
- **BASE OF GAS PRODUCTION AT XX38.0m.**