

COMPANY:
WELL: **EXAMPLE**
FIELD:
LOCATION:
PROVINCE: **LOG**
DATE:

DEPTH DRILLER:
TAG BTM:
BTM. LOG DEPTH:
TOP LOG DEPTH:

GAS FLOW RATE: 2.25 e3m3/d

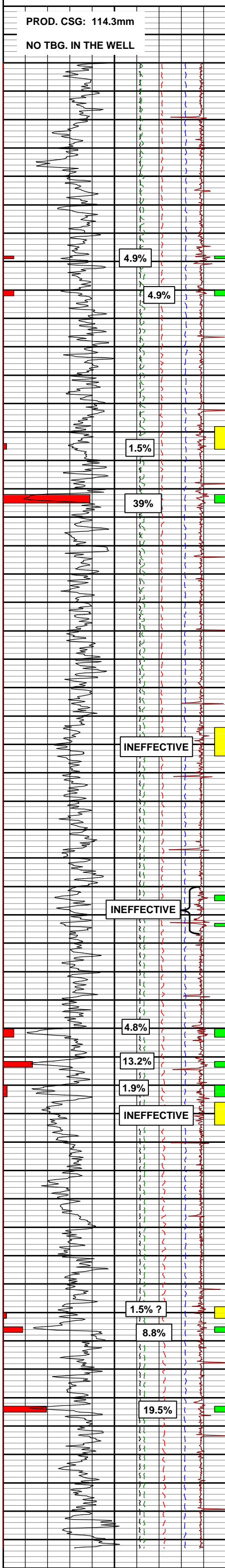
FLOWING WHP: 199 – 206 kpa

MEMORY LOG SERVICES:

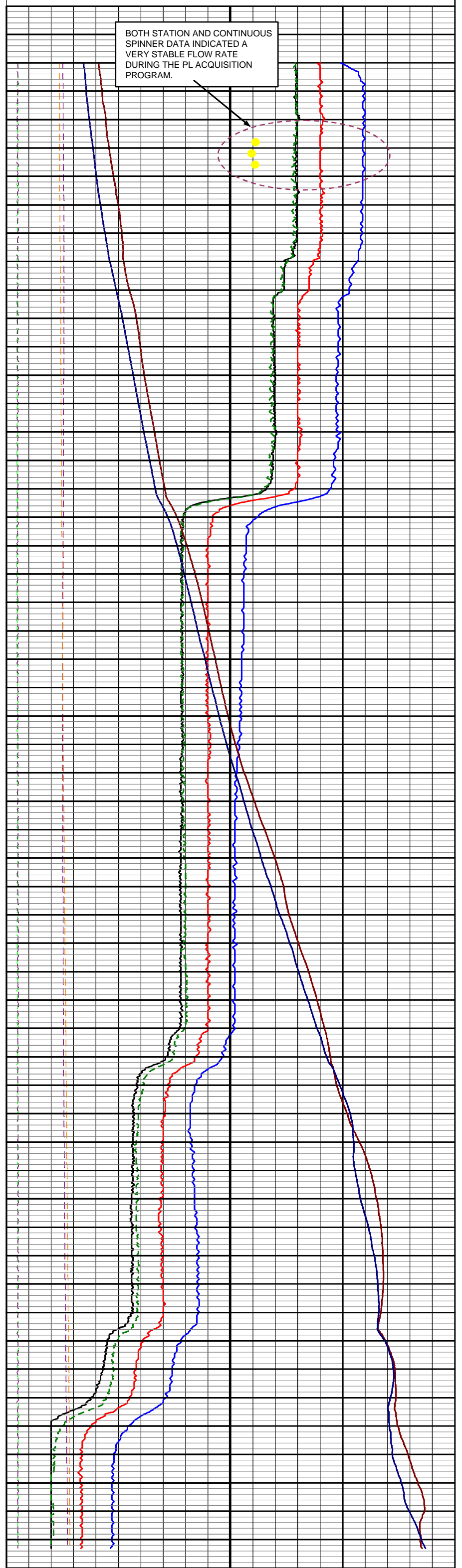
SPINNER, TEMP, QTZ. PRESS, GR, CCL

Collar Locator	mv	3500
Coal Perfs	----	0
Sand Perfs	----	0
Gamma Ray (PL)	api	150
Line Speed Pass #1	m/min	50
Line Speed Pass #2	m/min	50
Line Speed Pass #3	m/min	50
Line Speed Pass #4	m/min	50
Percent Inflow	%	100
Coal (Perf Intervals)		■
Edm. Sands (Perf. Intervals)		■
Percent Inflow		■

1:6000.0 MD in M



Flow Spinner Pass #1 Dn. @ 12 m/min	rps	18.0
Flow Spinner Pass #2 Dn. @ 22 m/min	rps	18.0
Flow Spinner Pass #3 Dn. @ 32 m/min.	rps	18.0
Flow Spinner Pass #4 Dn. @ 12 m/min (Repeat Pass)	rps	18.0
Flow Temperature Pass #1 Dn. @ 12 m/min	degC	17.5
Flow Temperature Pass #4 Dn. @ 12 m/min	degC	17.5
Flow Qtz. Pressure Pass #1 Dn. @ 12 m/min	kpa	475
Flow Qtz. Pressure Pass #4 Dn. @ 12 m/min.	kpa	475
Pseudo Fluid Density Pass #1 Dn. @ 12 m/min.	gm/cc	1.95
Pseudo Fluid Density Pass #4 Dn. @ 12 m/min.	gm/cc	2.0
Spinner / Flowmeter Stations	rps	18.0



P.L. INTERPRETATION SUMMARY:

TOTAL GAS PRODUCTION: (e3m3/d)	2.25
FLOWING WHP:	199 - 206 kpa
TOTAL SPINNER RPS	10.25

PERFORATION INTERVALS	EFFECTIVE INTERVALS	Qg (%)	Qg (e3m3/d)	SPINNER RPS
X69.0-X69.5m	X69.0-X69.5m	4.88	0.110	0.50
X75.0-X76.0m	X75.0-X76.0m	4.88	0.110	0.50
X99.0-X03.0m	X02.0-X03.0m	1.46	0.033	0.15
X11.0-X12.5m	X11.0-X12.5	39.02	0.878	4.00
X52.0-X57.0m	Ineffective	0.00	0.000	0.00
X81.5-X82.5m	Ineffective	0.00	0.000	0.00
X86.5-X87.0m	Ineffective	0.00	0.000	0.00
X05.0-X06.5m	X05.0-X06.5m	4.88	0.110	0.50
X10.8-X11.8m	X10.8-X11.8m	13.17	0.296	1.35
X15.0-X17.0m	X15.0-X17.0m	1.95	0.044	0.20
X18.0-X22.0m	Ineffective	0.00	0.000	0.00
X54.0-X56.0m	X55.0-X56.0m	1.46	0.033	0.15
X57.5-X58.5m	X57.5-X58.5m	8.78	0.198	0.90
X71.5-X72.5m	X71.5-X72.5m	19.51	0.439	2.00
TOTALS		100.00	2.250	10.25

- 97% OF THE TOTAL PRODUCTION IS COAL BED RELATED.

- THE FOUR PERFORATED SAND INTERVALS ARE ESSENTIALLY INEFFECTIVE.