

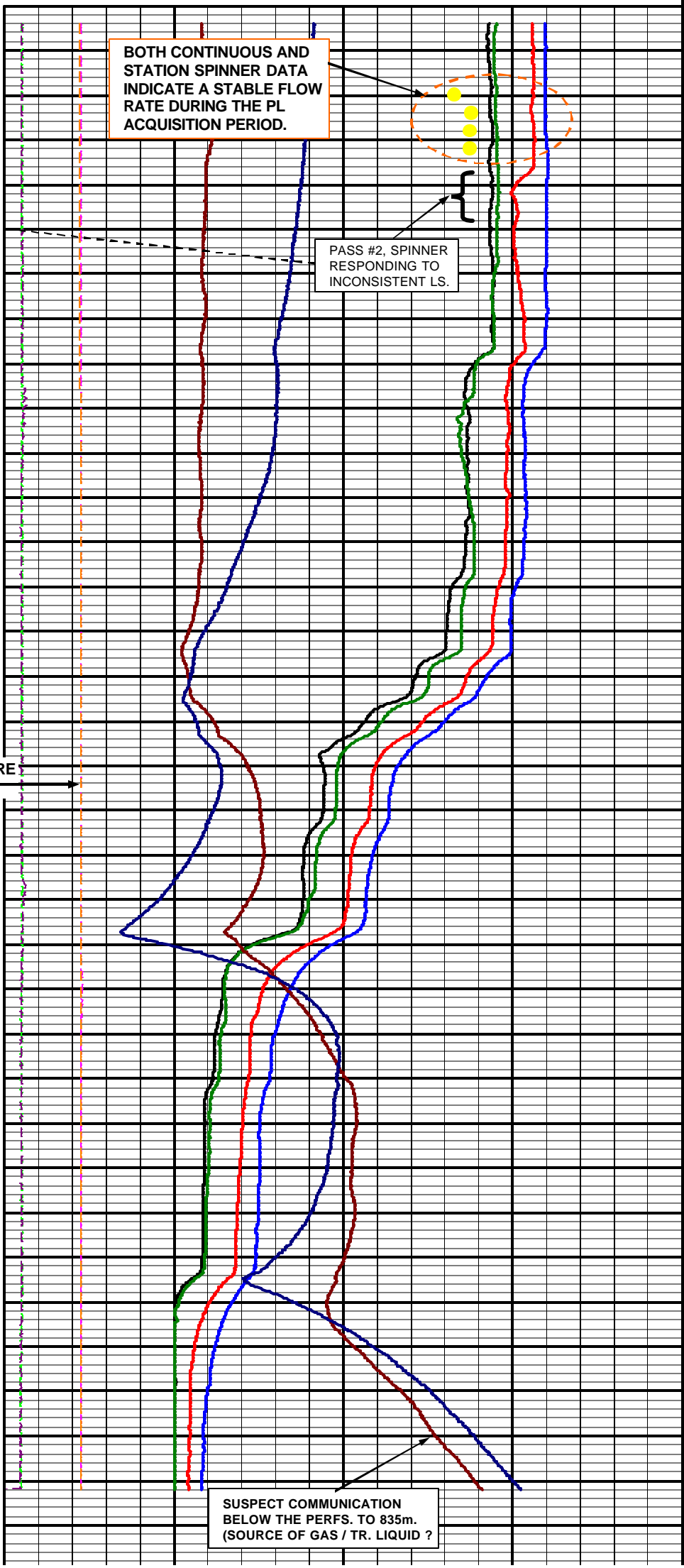
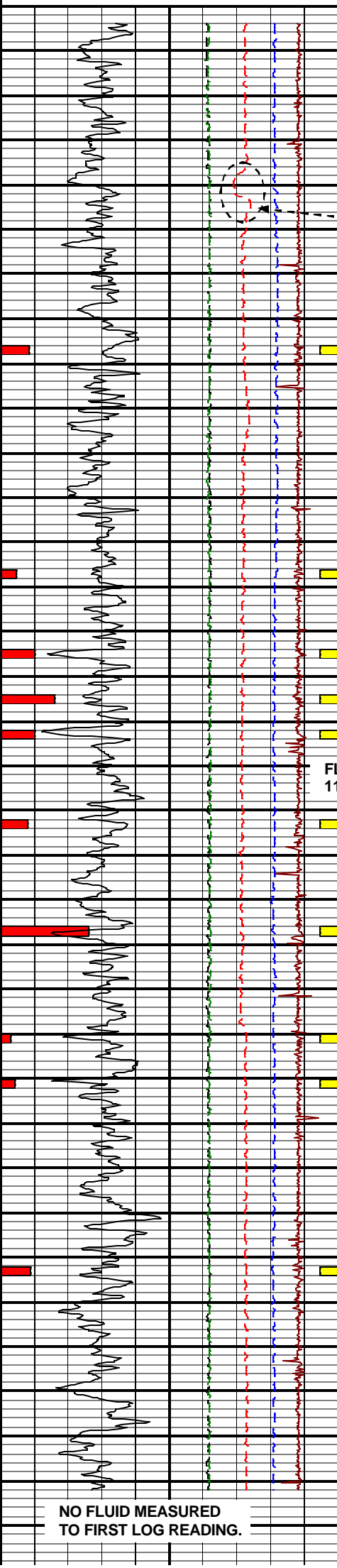
COMPANY:
WELL:
FIELD: **EXAMPLE:**
LOCATION: **CBM INFLOW PROFILE**
PROVINCE:
LOG DATE:

DEPTH DRILLER:
TAG BTM:
BTM. LOG DEPTH:
TOP LOG DEPTH:
SURF. PRODUCTION RATE: 1.3 e3m3/d
FLOWING WHP: 17 kpa (Gauge)

MEMORY LOG SERVICES:
SPINNER, TEMP, QTZ. PRESS, GR, CCL

Collar Locator	ccl	22000
Perfs	----	0
Gamma Ray (PL)	api	150
Line Speed Pass #1	m/min	-50
Line Speed Pass #2	m/min	-50
Line Speed Pass #3	m/min	-50
Line Speed Pass #4	m/min	-50
Percent Inflow	%	100
Perforation Intervals		
Percent Inflow		
CSG: 114.3mm		
NO TBG. IN THE WELL.		

Flow Spinner Pass #1 Dn. @ 12 m/min	rps	30.0
Flow Spinner Pass #2 Dn. @ 22 m/min.	rps	30.0
Flow Spinner Pass #3 Dn. @ 32 m/min.	rps	30.0
Flow Spinner Pass #4 Dn. @ 12 m/min. (Final Repeat Pass)	rps	30.0
Flow Temperature Pass #1 Dn. @ 12 m/min	degC	28.0
Flow Temperature Pass #4 Dn. @ 12 m/min	degC	28.0
Flow Qtz. Pressure Pass #1 Dn. @ 12 m/min	kpa	1000
Flow Qtz. Pressure Pass #4 Dn. @ 12 m/min.	kpa	1000
Pseudo Fluid Density Pass #1 Dn. @ 12 m/min.	gm/cc	3.9
Pseudo Fluid Density Pass #4 Dn. @ 12 m/min.	gm/cc	3.9
Spinner Stations	rps	30.0



P.L. INTERPRETATION SUMMARY:

TOTAL GAS PRODUCTION: (e3m3/d)	1.3
FLOWING WHP:	17.0 kpa
TOTAL SPINNER (rps)	16.7

PERFORATION INTERVALS	EFFECTIVE INTERVALS	Qg (%)	Qg (e3m3/d)	SPINNER RPS	COMMENTS
X13.0-X14.0m	X13.0-X14.0m	8.4	0.109	1.40	
X38.0-X39.0m	X38.0-X39.0m	4.8	0.062	0.80	
X47.0-X48.0m	X47.0-X48.0m	10.2	0.132	1.70	
X52.0-X53.0m	X52.0-X53.0m	16.2	0.210	2.70	Major gas prod. source
X56.0-X57.0m	X56.0-X57.0m	10.2	0.132	1.70	
X66.0-X67.0m	X66.0-X67.0m	7.8	0.101	1.30	
X78.0-X79.0m	X78.0-X79.0m	26.3	0.343	4.40	Major gas prod. source.
X90.0-X91.0m	X90.0-X91.0m	3.0	0.039	0.50	
X95.0-X96.0m	X95.0-X96.0m	4.2	0.054	0.70	
X16.0-X17.0m	X16.0-X17.0m	9.0	0.117	1.50	
TOTALS		100.0	1.300	16.7	